



OUTSTANDING VALUES ON PRE-OWNED EQUIPMENT

Great condition spiral freezer. This freezer was owned by a loyal Martin/Baron customer who is now enlarging his production capacity. Excellent flavor and texture. Excellent moisture retention. Flexible to freeze a variety of products. High rate of heat transfer. Low capital investment. Meets USDA and OSHA requirements. Located in Southern USA.

MARTIN/BARON 34X660 SPIRAL FREEZER

Brand	Martin/Baron
Model	36-066—11
Year	2003
Condition	Needs Refurbish
Gas	CO2/Nitrogen
Freezing Length	660'
Belt Width Usable	34"
Belt Width Actual	36"
Infeed Height	3' - 4"
Discharge Height	9' - 4"
Configuration	Pass Thru
Overall Depth	24' - 0"
Overall Width	24' - 0"
Overall Height	12' - 6"
Electrics	240/480V 80/40A



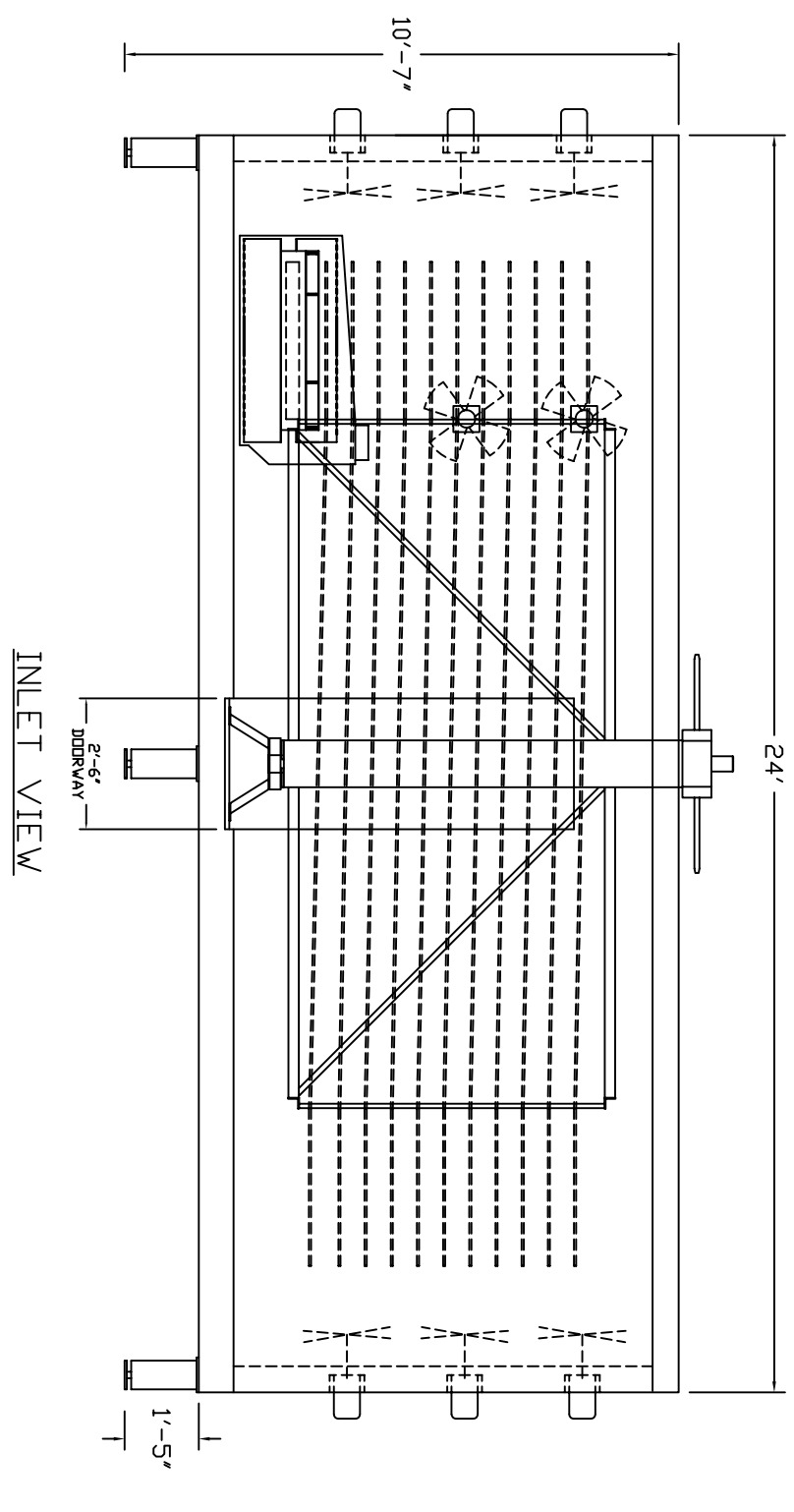
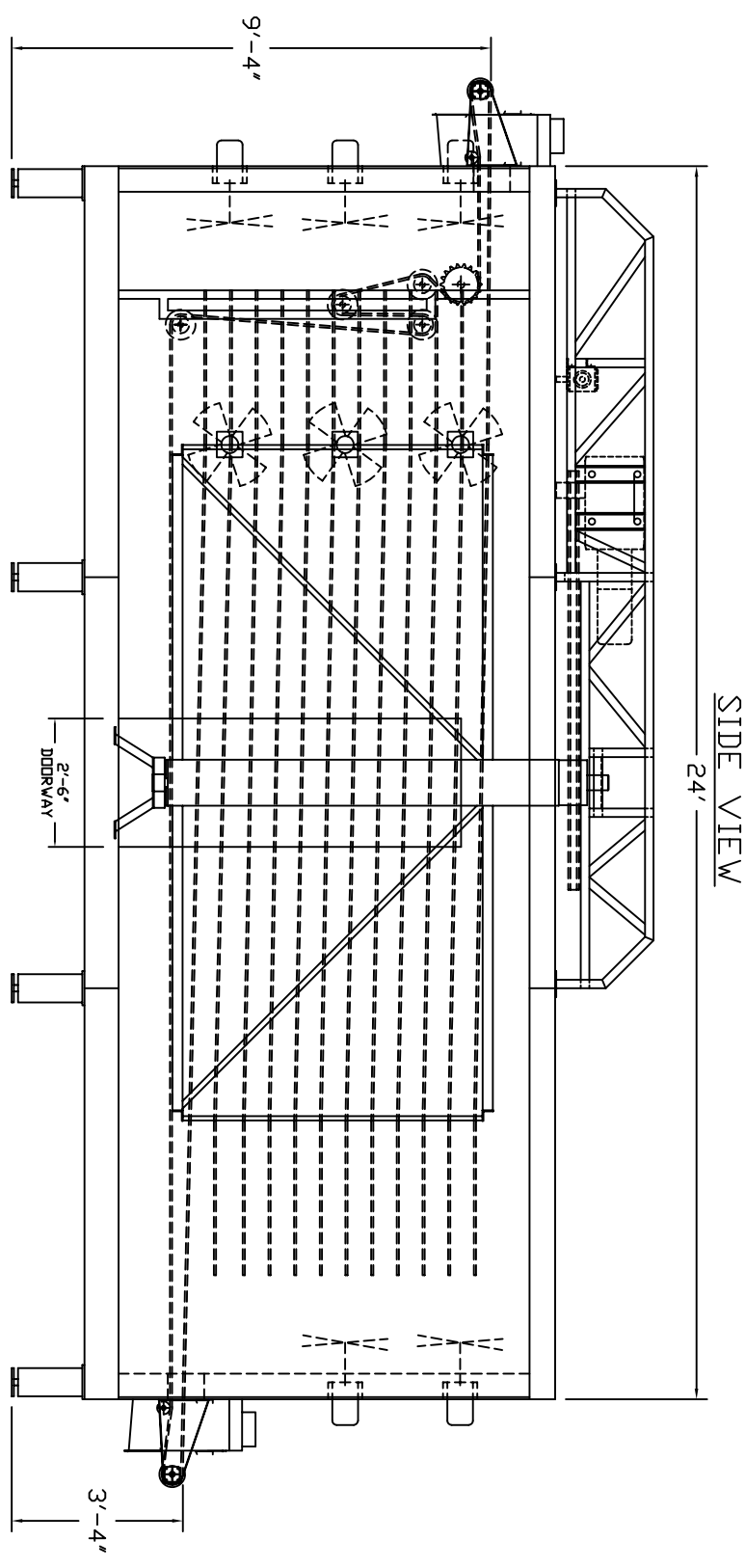
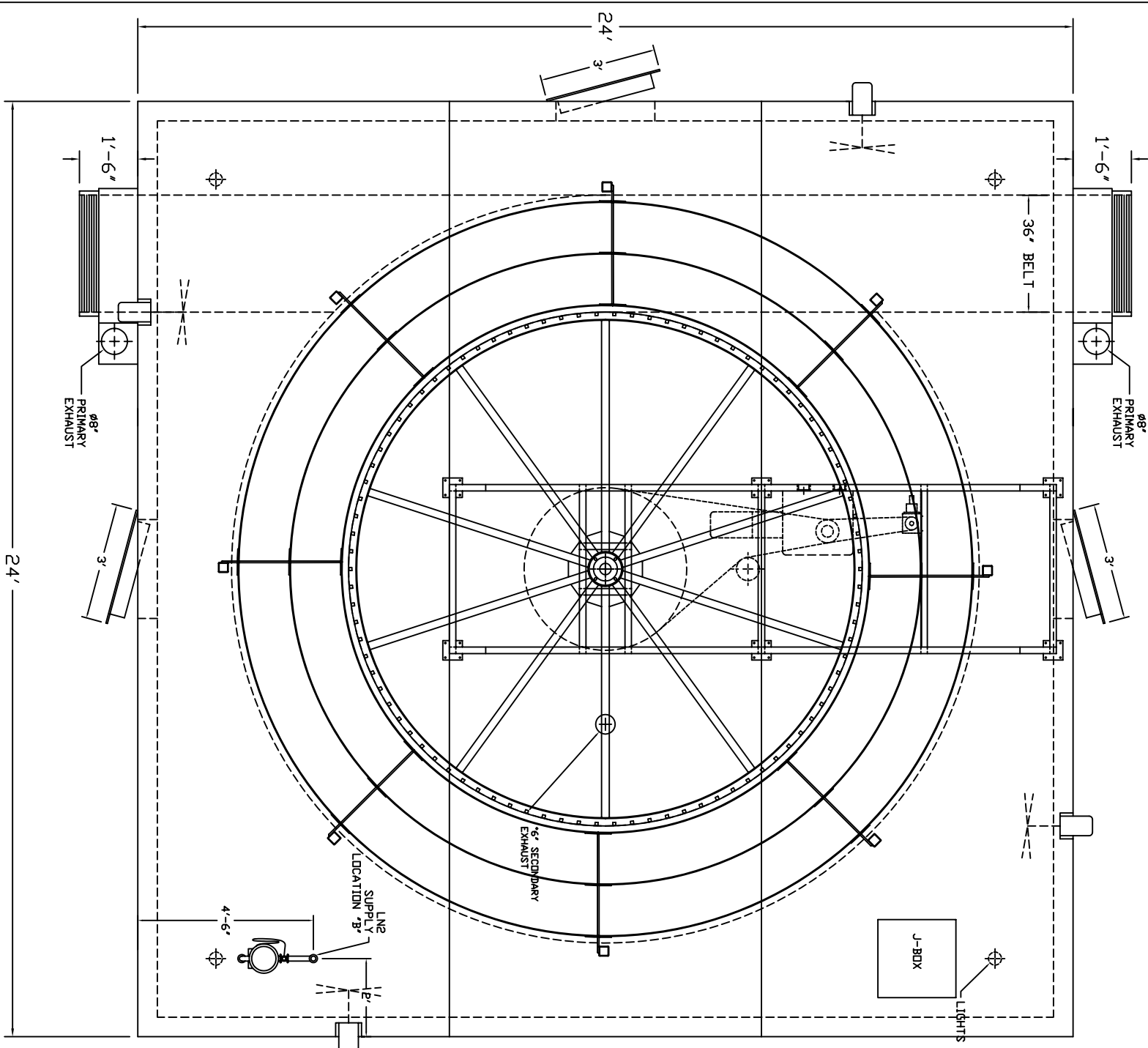
MBI Cryogenics offers complete cryogenic services including:

- Cryogenic Vacuum Pipe
- Foam Insulated Pipe
- Bulk Tanks
- Refurbishment
- Exhaust Systems
- Field Repairs
- Start up assistance
- Product analysis

Visit MBICRYO.com for a complete list of all new and pre-owned equipment including tunnel, spiral, immersion, and batch freezers. Also see our CO2 chilling products.

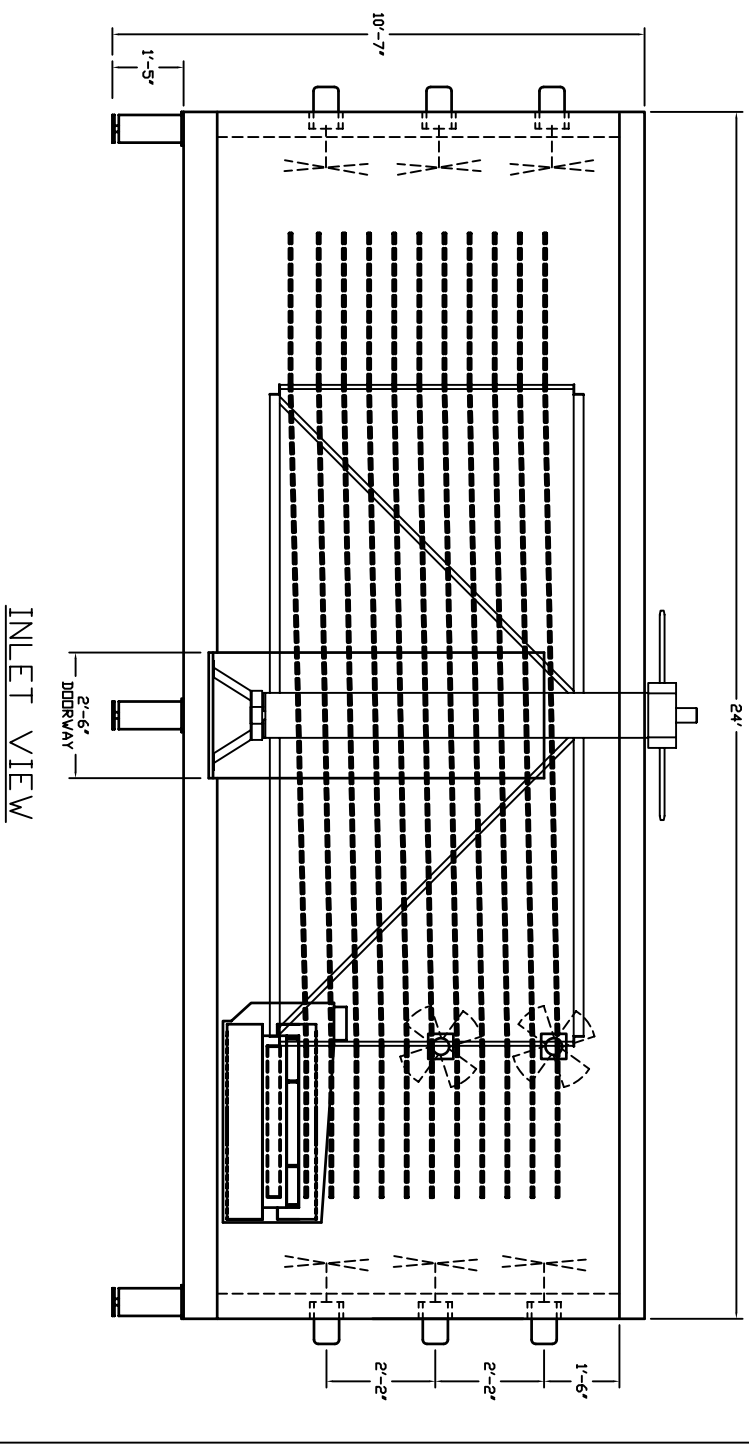
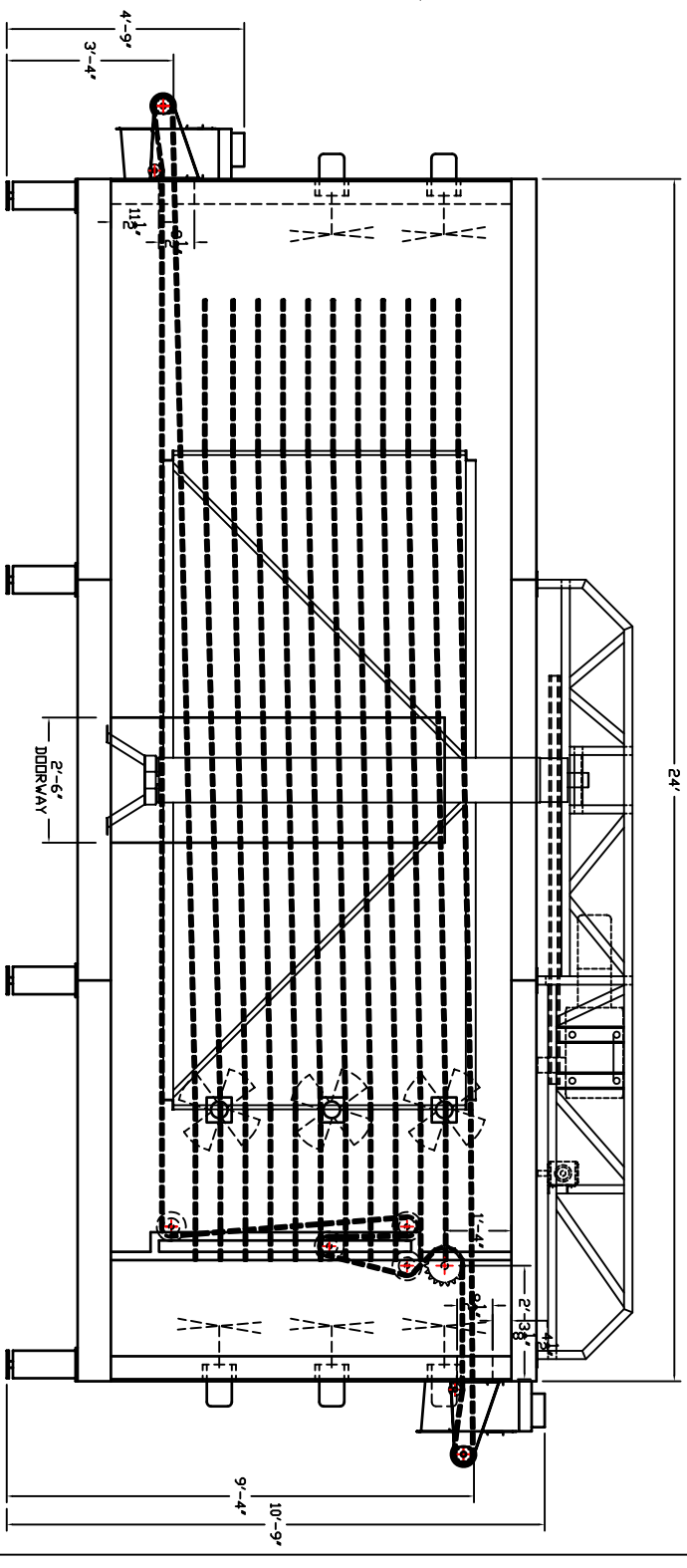
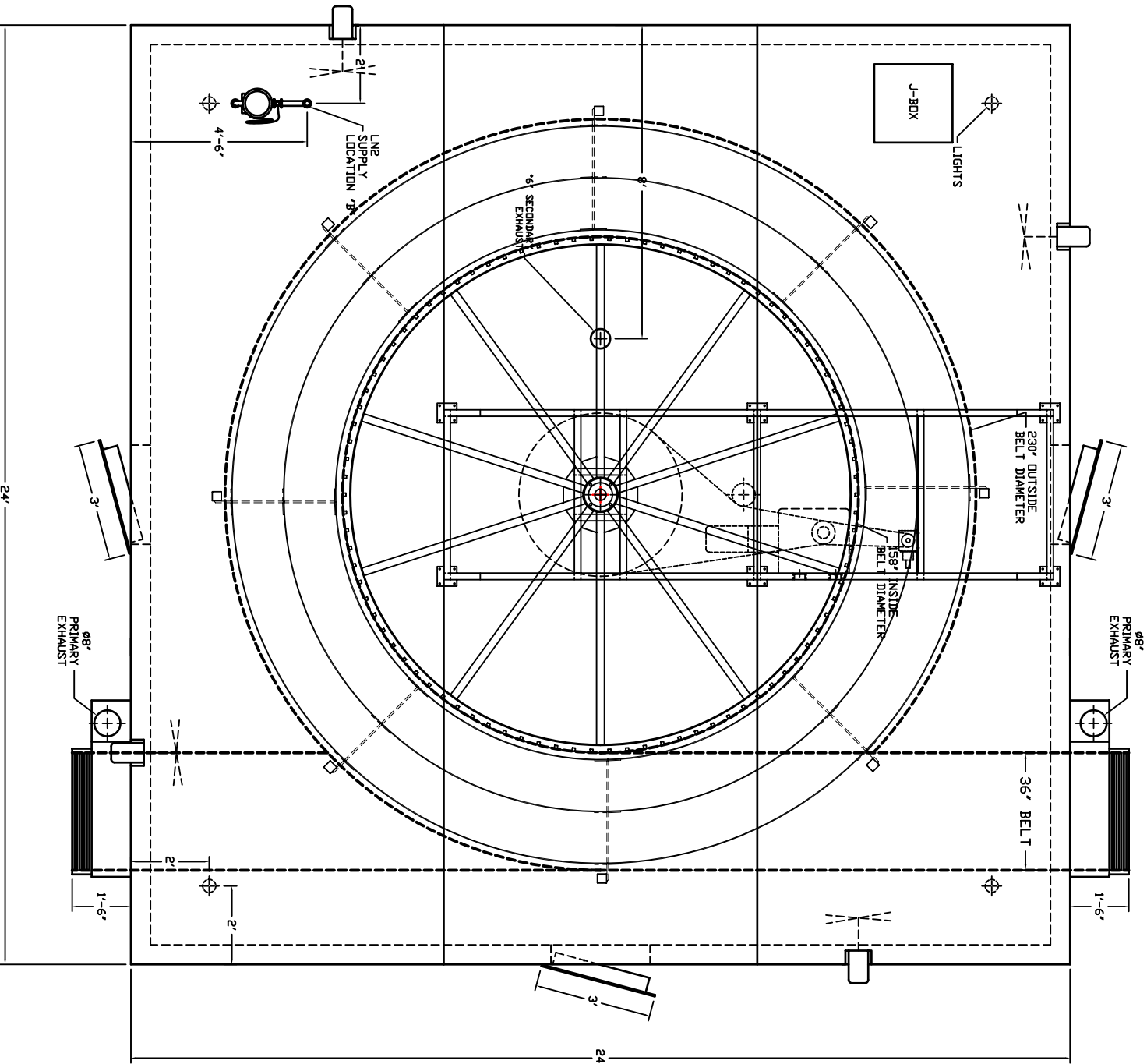


- NOTES: UNLESS OTHERWISE SPECIFIED:
 1. INTERPRET DRAWING PER ANSI Y14.5M-1982
 2. ALL DIMENSIONS ARE IN INCHES.
 3. NOT ALL FEATURES SHOWN IN EVERY VIEW.
 4. ACTUAL USABLE BELT LENGTH IS 684".
 5. ALLOW 3" MIN. ABOVE ENCLOSURE FOR DRIVE SYSTEM.
 6. 230/460 VOLT - 80/40 AMPS - 3 PHASE - 60 HZ
 7. EXHAUST SYSTEM AND LNG SUPPLY PIPING SOLD SEPARATELY.



MARTIN/BARON INC.
 SCALE: NONE
 DATE: 6/10/04
 J-040601
 DRAWN BY: JDM
 REV:
34" X 660' LN2 SPIRAL
 GENERAL ASSEMBLY - REV
 DRAWING NO.
 D-040610

- NOTES: UNLESS OTHERWISE SPECIFIED:
 1. INTERPRET DRAWING PER ANSI Y14.5M-1982
 2. ALL DIMENSIONS ARE IN INCHES.
 3. NOT ALL FEATURES SHOWN IN EVERY VIEW.
 4. ACTUAL USABLE BELT LENGTH IS 684".
 5. ALLOW 3' MIN. ABOVE ENCLOSURE FOR DRIVE SYSTEM.
 6. 230/460 VOLT - 80/40 AMPS - 3 PHASE - 60 HZ
 7. EXHAUST SYSTEM AND LN2 SUPPLY PIPING SOLD SEPARATELY.



SIDE VIEW

INLET VIEW

MARTIN/BARON INC.	
SCALE: NONE	DRAWN BY: JDM
DATE: 2/26/03	REV: 3
34" X 660' LN2 SPIRAL	
GENERAL ASSEMBLY	
DRAWING NO. D-030104	